

# Centrifuge for Large Size Sample

Big size refrigerating centrifuge for blood-bag or various tubes.

## Component R

<b>TEMP</b> -10 °C to +40 °C	<b>5,000</b> MAX. RPM	<b>7,217</b> MAX. RCF	<b>1,000ml X 6</b> MAX. CAP
---------------------------------	--------------------------	--------------------------	--------------------------------



### Features

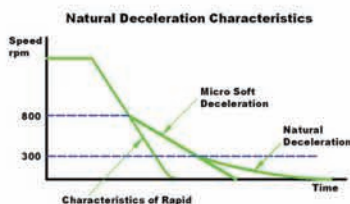
- Graphic LCD
- Fast and easy operation and correction by Key Pad
- Swing-out rotor of big capacity of 1,000 ml, bucket style
- Soft & silent operation
- Memory function for setting various conditions
- Environmentally refrigerating system of cfc-free
- Automatic RPM/RCF calculating system
- 10 levels of Accel./Decel. is suitable for separation of sensitive layers
- Efficient cooling system
- Wind shield minimizing air resistance
- Specially designed for separating blood platelet in blood bank and hospital or the treatment of big capacity

### Stable Sampling

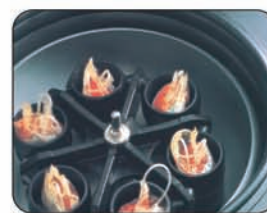
10steps for acceleration and deceleration can be selected for delicate liquid experiment.

### Eco-friendly cooling system

Eco-friendly and effective cooling with CFC Free freezing system.



WS1000-6B



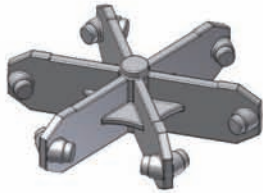
Optimized chamber for effective cooling

Description	Specification	Remarks
Max.RPM	5,000 rpm	
Max.RCF	7,217 xg	
Max. capacity	1,000ml x 6	
Time	99hrs 59min 59sec	
Display	RPM, RCF, Time, Temperature, Program, Accel/Decel, Rotor Number, Rotor Radius	
Accel/Decel	10 step	
Temp	-10 °C ~ 40 °C	
Motor	AC Induction Motor	
Power supply	AC220V, 50/60Hz, Single Phase	3.4Kw
Dimension	700W x 807D x 858H/mm	
Weight, Kg	380Kg	

\* Please note that technical specifications subject to change.

## Swing Rotors

### WS1000-6B Wind shield



**Type** Swing Rotor  $\angle 90^\circ\text{C}$   
**Max. RPM** 5,000 rpm  
**Max. RCF** 7,217 xg  
**Radius** 225.1 mm  
**Dim.** 333.7 x 362 x 55 mm



<b>Tube Capacity (ml)</b>	5	10	15	50	250	500	1,000	50	15	50	480
<b>Dimensions <math>\varnothing</math> x L mm</b>	12 x 75	13 x 100	16 x 114	29 x 104	61.8 x 123	69.5 x 170.2	97 x 152	30 x 115	17 x 120		
<b>Tube Type</b>											
<b>Adapter</b>											
<b>Tube per Adapter</b>	26	26	19	7	1	1	1	5	14	5	1
<b>Tube per Rotor</b>	156	156	114	42	6	6	6	30	84	30	6
<b>Max.RCF</b>	7,085	7,063	7,094	6,859	7,136	10,259	7,161	7,055	6,990	5,213	6,937
<b>Radius(mm)</b>	253.5	252.7	253.8	245.4	255.3	254.9	256.2	252.4	250.1	186.5	248.2
<b>Max.RPM</b>	5,000										
<b>Boring <math>\varnothing</math> x L mm</b>	13 x 70	14 x 89.5	17 x 99.5	29.2 x 81	62.2 x 99	75.5 x 99	96 x 153	29.5 x 99.5	17 x 89	27 x 65	-
<b>Color / Material</b>	Magenta	Yellow	Green	White	Cyan	Violet	Chartreuse	Blue	Sky Blue	Black	Black
<b>Cat.NO.</b>	T5-26	T10-26	T15-19	T50-7	T250-1	T500-1	T1000-1	T50-5C	T15-14C	TS50-5	-
<b>Max. length <math>\varnothing</math> x L mm</b>	13 x 187.5	14 x 186.5	17 x 185	29.2 x 179.5	62.2 x 189	75.5 x 189	96 x 190	17 x 86	13 x 184	27 x 90	-
<b>Adapter</b>											
<b>Tube per Adapter</b>	30	24	17	4	1	1					
<b>Tube per Rotor</b>	180	144	102	24	6	6					
<b>Max.RCF</b>	9,897	9,897	9,897	9,897	9,897	9,897					
<b>Radius(mm)</b>	6,873										
<b>Max.RPM</b>	5,000										
<b>Boring <math>\varnothing</math> x L mm</b>	13 x 55	13.5 x 80	17.3 x 80	29 x 80	62 x 80	74 x 80					
<b>Color / Material</b>	Crimson	Yellow	Green	White	Red	Blue					
<b>Cat.NO.</b>	T5-30	T10-24	T15-17	T50-4	T250-1	T500-1					
<b>Max. length <math>\varnothing</math> x L mm</b>	13 x 180	13.5 x 180	17.3 x 180	29 x 180	62 x 180	74 x 180					

**Component R** Max. RPM : 5,000 Max. RCF : 7,217 xg