

KANE455

Bluetooth™ Communication



Stock No. 19081

August 2011

© Kane International Ltd

Bluetooth™ Communication with Pass Key

1: Power up the KANE455 and allow to fresh air purge.

2: Rotate the dial to Menu and press 

3: Press  x 3.

4: Press  to select PASSKEY

5: Enter a PASSKEY using ,  and  e.g.1111.

6: The screen will briefly display send to Bluetooth.

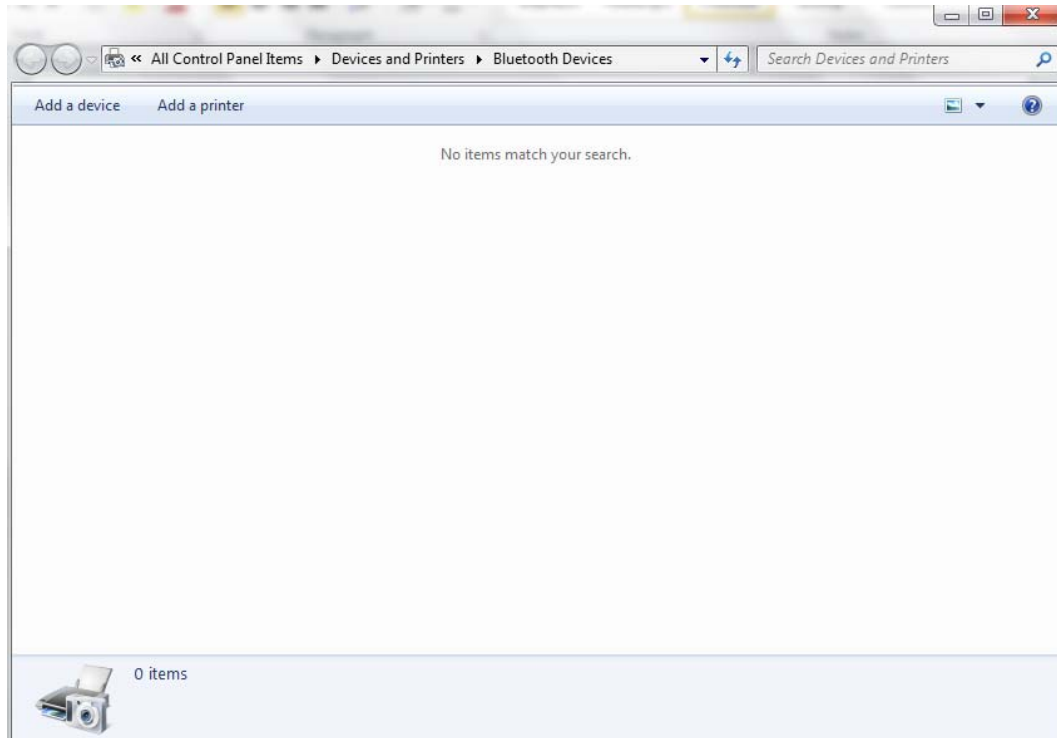
7: Press  to select output.

8: Change the output to PRINTER using  and select with 

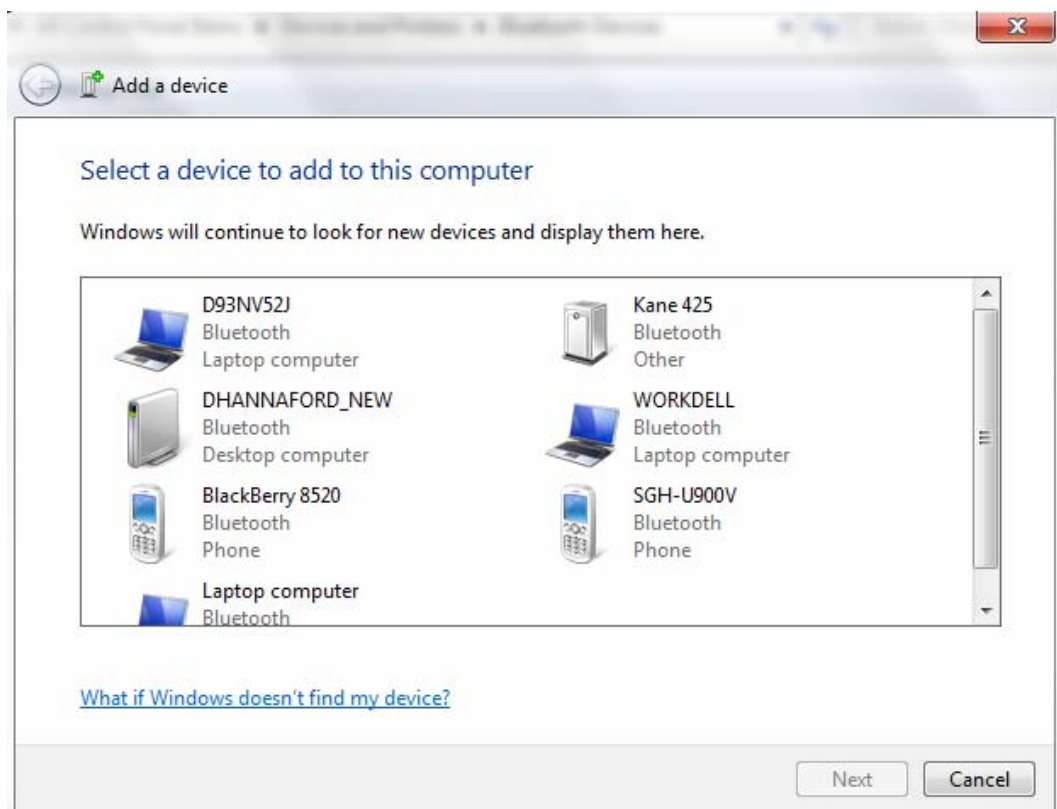
9: Select exit and rotate the dial to Ratio.

Pairing with Laptop / PC – Windows 7

1: Open the Bluetooth™ Manger

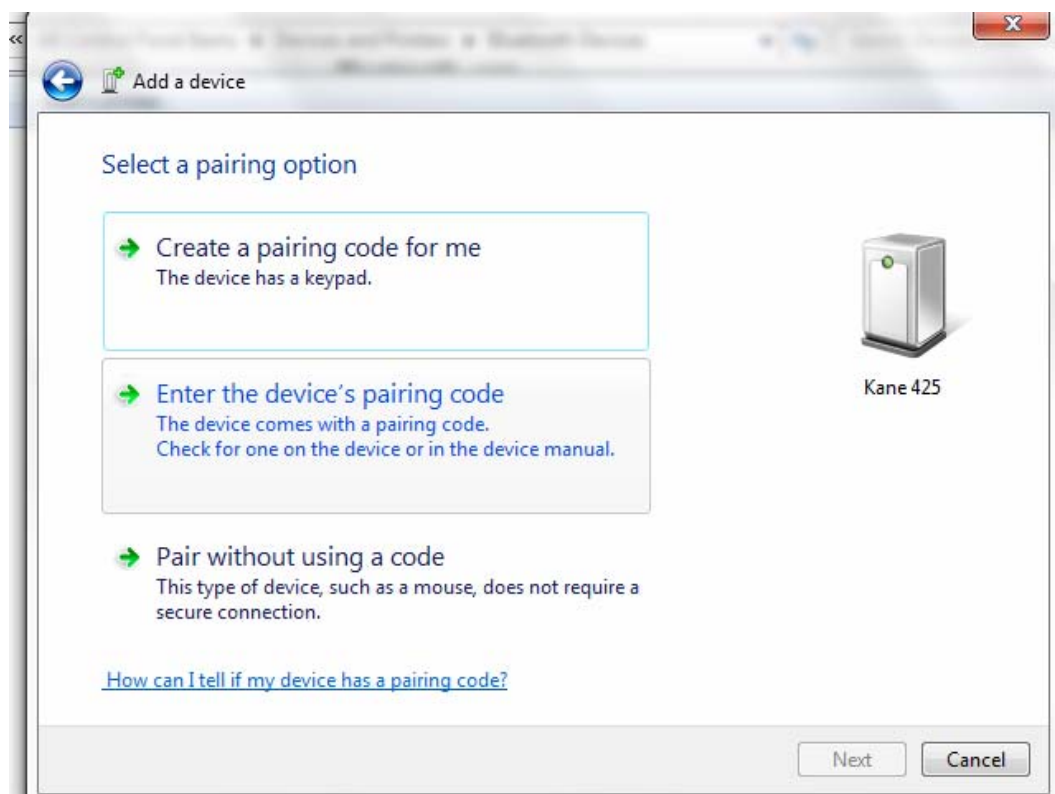


2: Select ADD DEVICE.

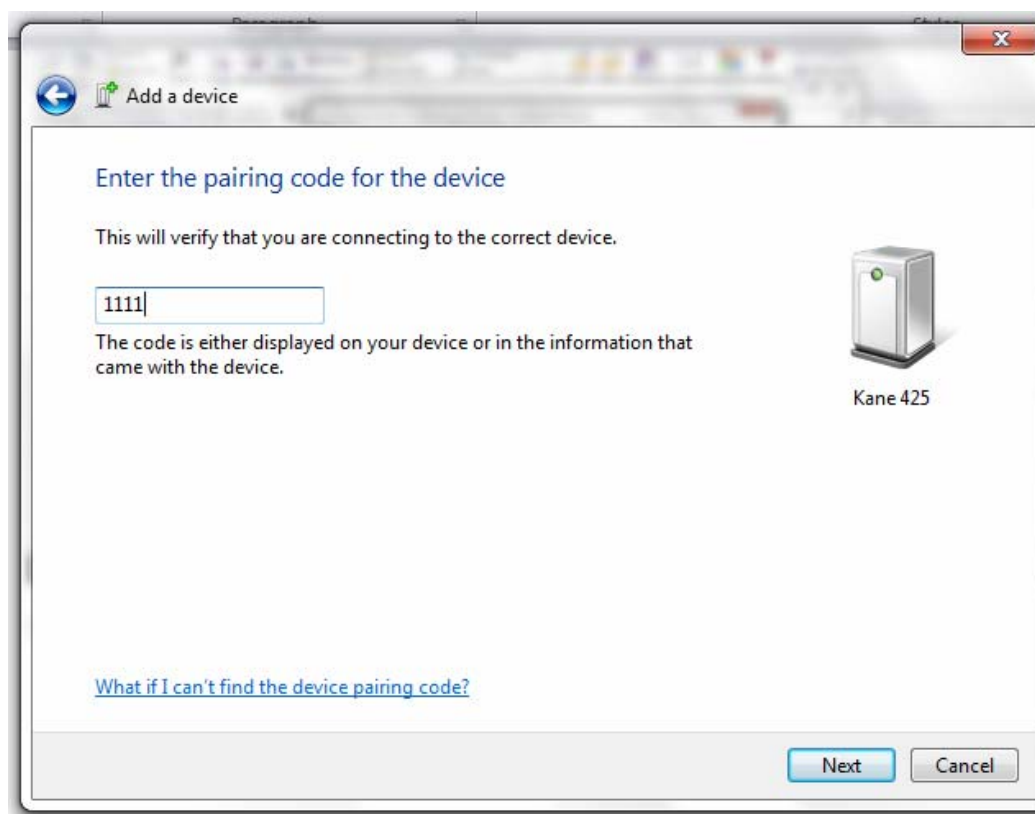


3: Select the KANE455 from the list and click next.

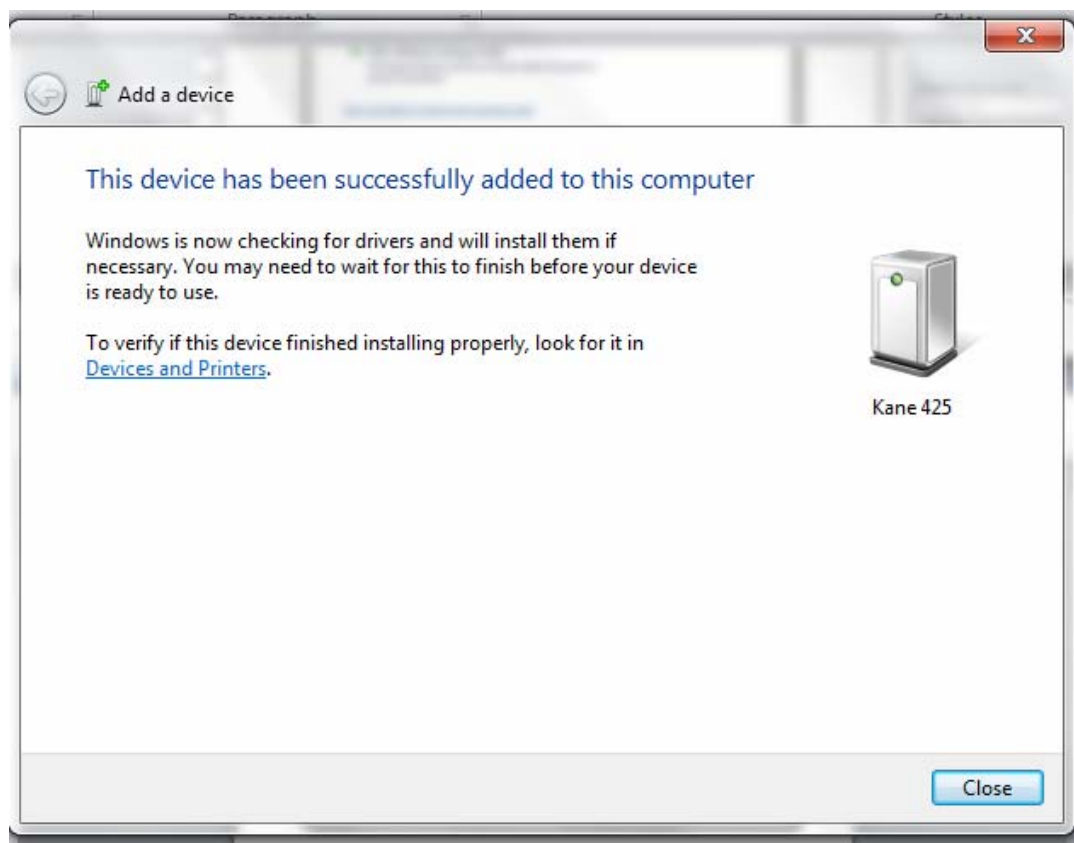
4: Select Enter the device pairing code.



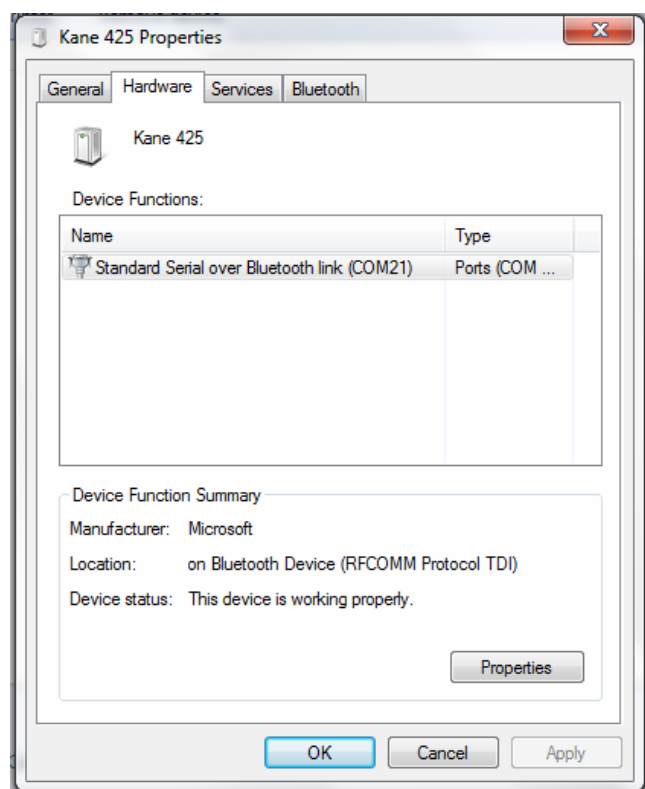
5: Enter the pairing code you set on the KANE455 e.g.1111.



6: This message will appear.



7: Select the paired KANE455 press the right hand mouse key, select the properties to see the com port.



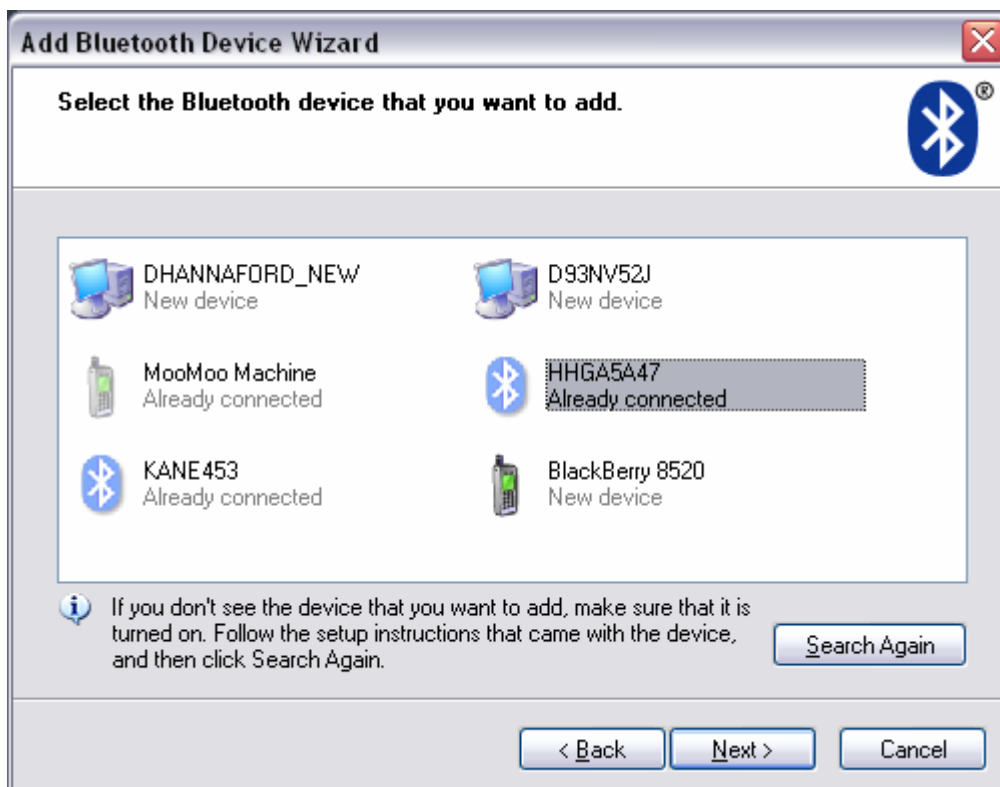
8: Select ok.

Pairing with Laptop / PC – Windows XP

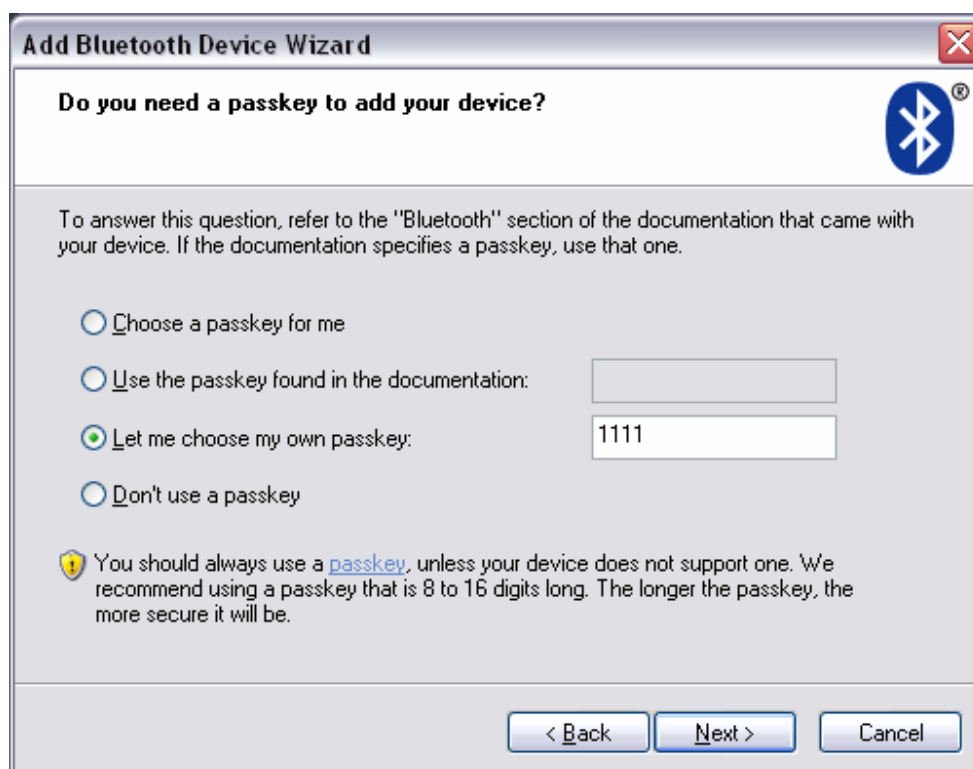
- 1: Click the Bluetooth™ icon on the taskbar followed by: Add a Bluetooth Device. This opens the Add Bluetooth device Wizard



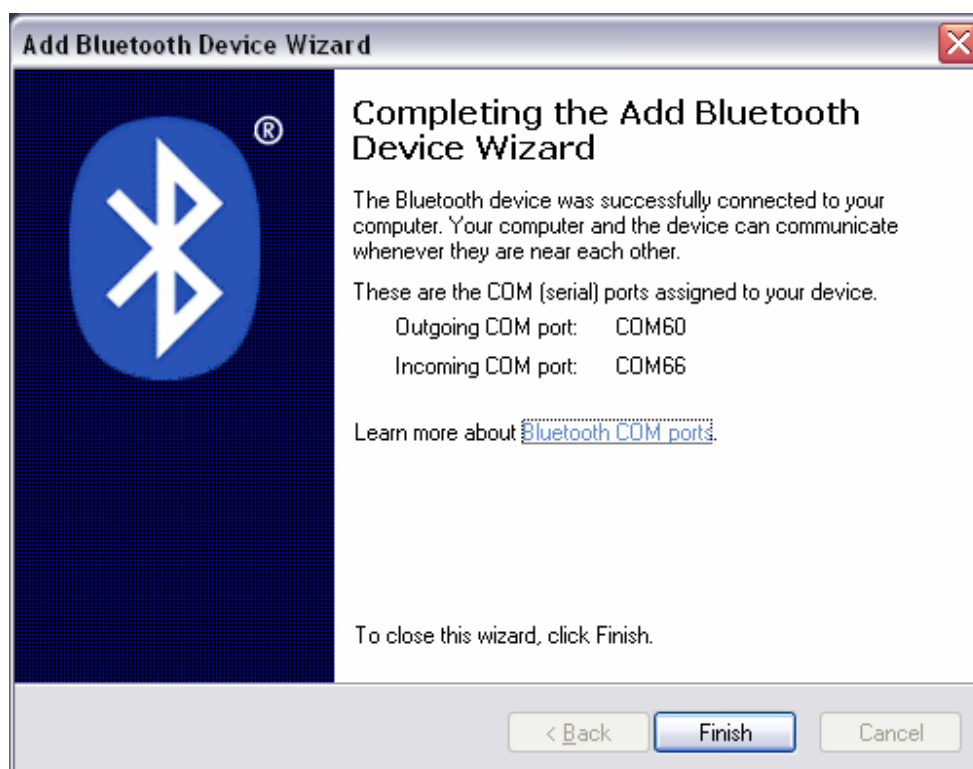
- 2: Tick "My device is set up and ready to be found" and click "Next"



- 3: Highlight the device you wish to add and click “Next” (if your device is not found Search again).



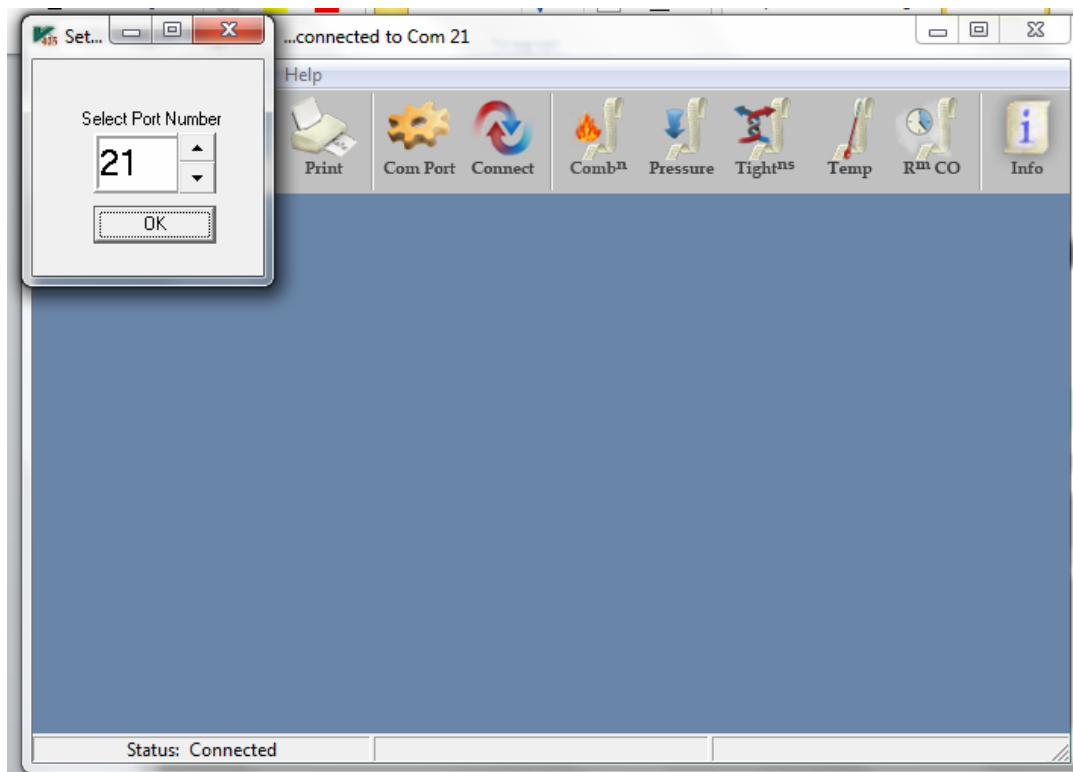
- 4: Select “let me chose my own passkey” and enter the code you set on the KANE455 e.g. 1111. Then click Next and this message will appear:



- 5: Note the Outgoing COM port number and click Finish.

KANE425 PC Software

- 1: Open the KANE425 PC software and select the com port and then connect.



- 2: Connected will appear in the bottom left hand corner.

