

Highly precise  
temperature logger

**Precy**

**K320**



**High precision**

**Resolution : 0.01 °C**

**Precision (Stability): ±0.1 °C**

**JCSS Calibration Service Available**

# High measurement accuracy in a wide temperature measuring range!

## Features



High precision  
High resolution

Measurement accuracy  $\pm 0.1$  degree Celsius  
Resolution 0.01 degree Celsius  
1/10 °C to 1/100 °C change is possible

Widespread  
measurement  
range

High precision temperature measurement in the range from  $-40 \sim 320$  °C degrees Celsius

Abundant  
record capacity

Abundant record capacity : MAX20,480 data /2ch  
10,240 MAX data per 1ch

20 kinds of  
record intervals

Record interval from 100ms to 24H is selectable

Measuring  
points : Two  
channels

Temperature measurement at two measuring points with A & B two kinds temperature  
A-B,  $\Delta A$ ,  $\Delta B$ ,  $\Delta(A-B)$

Repetition  
recording

New data can be recorded deleting old data by changing mode

Suitable for IP65

Usable in safe in various daily life

PC  
communication

Measured data is easily outputted to PC by USB communication

Prevention of  
an incorrect  
operation

Incorrect operation can be reduced by separating measuring mode and setting change mode.

Long life

It is available to use for approx. 6 months with AA batteries three pieces  
• It varies by measuring frequency.

# Handy and suitable for IP65 ! Measurable in various scenes!



※ Note : it is not completely waterproof

## Use example

- ◇As standard device for internal calibration purpose
- ◇Pharmaceuticals
  - Temperature management for storage container
- ◇Food
  - Temperature management for hygienic management apparatus
- ◇Air conditioning
  - Room temperature management for air conditioner
  - Room temperature management for clean room etc
- ◇Industrial equipments
  - Temperature management for various kinds of production facilities

## Graph function

Graph indication

Graph indication of measured temperature and temperature deviation or non-graphy indication of measured temperature and temperature deviation can be available by one click

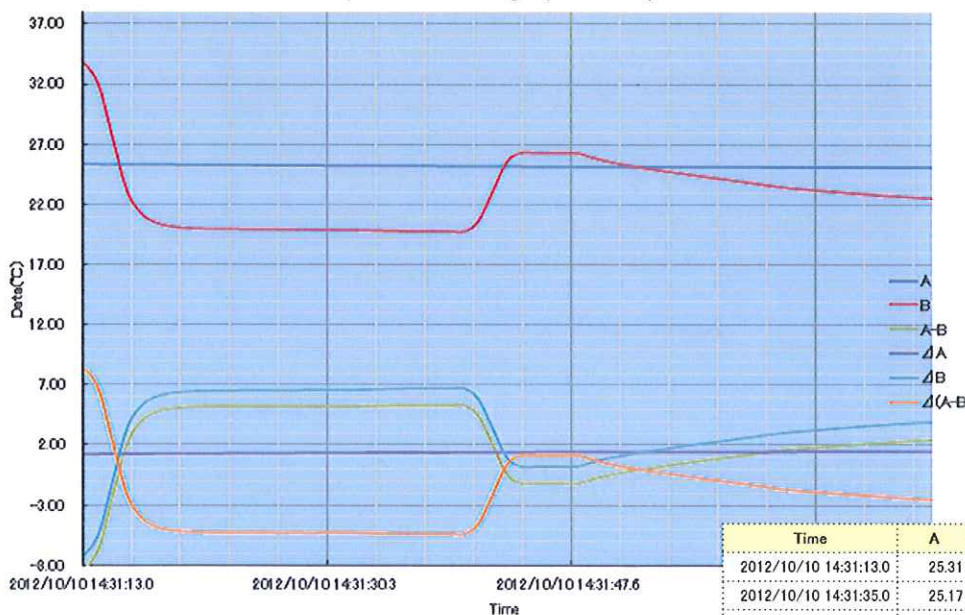
Simple operation

CSV and graph making in five steps is possible

Drawing range

Graph making in a voluntary time range is possible

Temperature data graph example



Graph setting form

グラフ設定フォーム

表示/非表示の切り替え

A     B     A - B  
 ΔA     ΔB     Δ(A-B)

グラフ範囲指定

開始

終了  (yyyy/m/d h:mm:ss)

Measurement data example

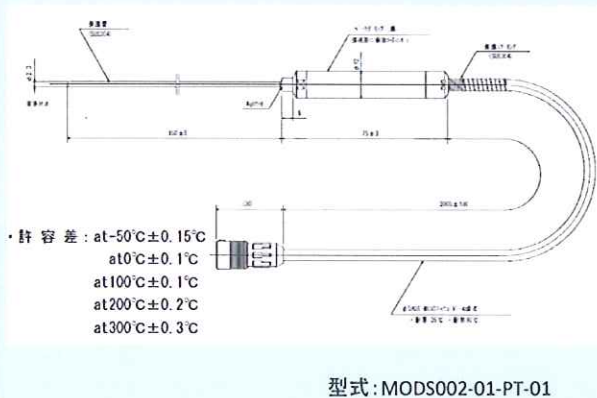
Time	A	B	A-B	ΔA	ΔB	Δ(A-B)
2012/10/10 14:31:13.0	25.31	33.63	-8.32	1.24	-7.09	8.33
2012/10/10 14:31:35.0	25.17	19.82	5.35	1.38	6.72	-5.34
2012/10/10 14:31:43.0	25.13	25.58	-0.45	1.42	0.96	0.46
2012/10/10 14:32:13.0	25.06	22.57	2.49	1.49	3.97	-2.48

## Specifications

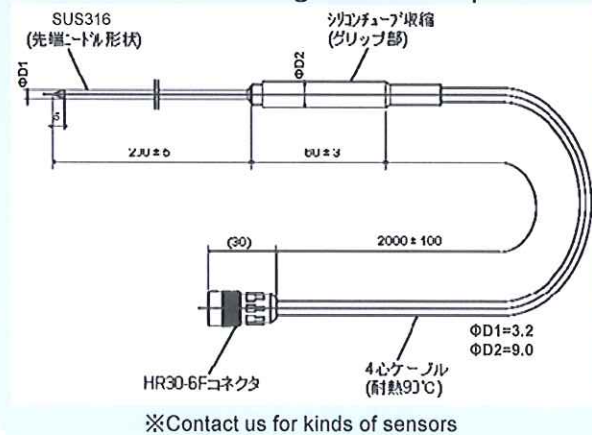
Measurement channel number	2 channels (Selectable 2 channels out of a built-in 1channel and external 2channels)
Input	Platinum resistance bulb
Measurement temperature range	-40~320 degrees Celsius (temperature sensor) ※ - 20~60 degrees Celsius (built-in temperature sensor)
Measurement accuracy	±0.1°C
Measurement resolution	1/100°C
Recording data	MAX20,480 data /2channels ※ MAX10,240 data per 1channel
Recording interval	Selectable from 20 kinds of recording intervals (100ms ~24H)
Display	Liquid crystal panel (black and white)
The number of the indication figures	Changeable 1/10 °C or 1/100 °C
Monitor indication	Channel indication, temperature indication, measuring unit indication, displacement level mode indication, measurement record status, memory capacity, battery warning
Alarm function	Alarm Indication appears when reaching the designated temperature
Clock	RTC(Real Time Clock) is equipped
Interface	USB communication
Power supply	Three AA battery
Battery life	Approximately six months
Data security function	Function at the time when voltage of batteries is decreased and main switch is OFF ※At the time of battery exchange, it functions because of an electric double layer condenser for around several minutes
Size	65mm×140mm×30mm
Main body operating temperature	-20°C~50°C
Protection structure	Suitable for IP65
Accessories	Three batteries, USB cable, standard Pt sensor one piece, instruction manual (simplified) ※The application software (Excel) is available by downloading form our product H.P.
Option	Issue of Calibration Certificate

## Sensor

### K320 standard Pt sensor



### Sensor for measuring central temperature



◇ Please note that the above specifications is for standard temperature which is 23 degrees Celsius +-5 degrees Celsius.

Please note that the mentioned product performance is applied to before the shipment and it shall not applied to when the product is used under customers' environment.

Please contact below distributor for more details

販売店



Tateyama Kagaku industry Co., Ltd.

Module technology company

3-6, Tsukioka-cho, Toyama-city, 939-8132 Japan

TEL:81-50-5535-5824 FAX: 81-76-429-8369

<H.P.> <http://www.tateyama.jp>

<Mail Address> [module@tateyama.or.jp](mailto:module@tateyama.or.jp)

[h.takeda@tateyama.or.jp](mailto:h.takeda@tateyama.or.jp)