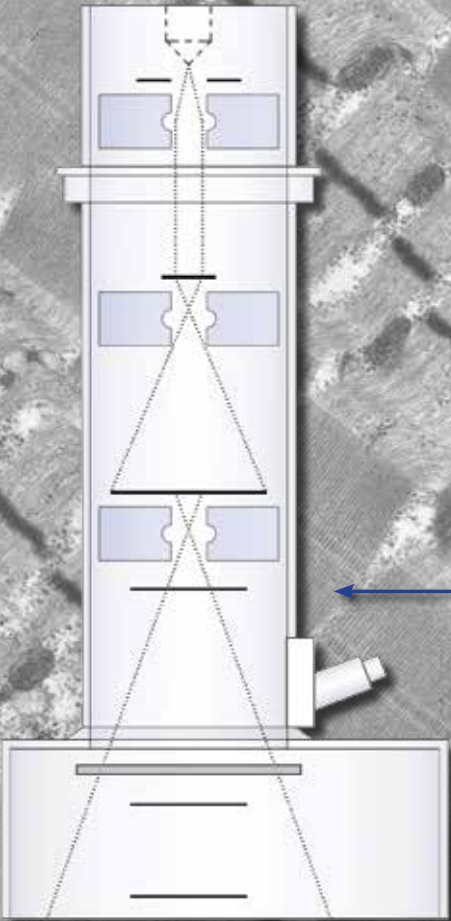


Advanced Microscopy Techniques (AMT) has devoted its design and manufacturing efforts toward the goal of providing excellence in TEM digital camera imaging systems. High performance cameras coupled with easy to use software provide reliable imaging solutions.

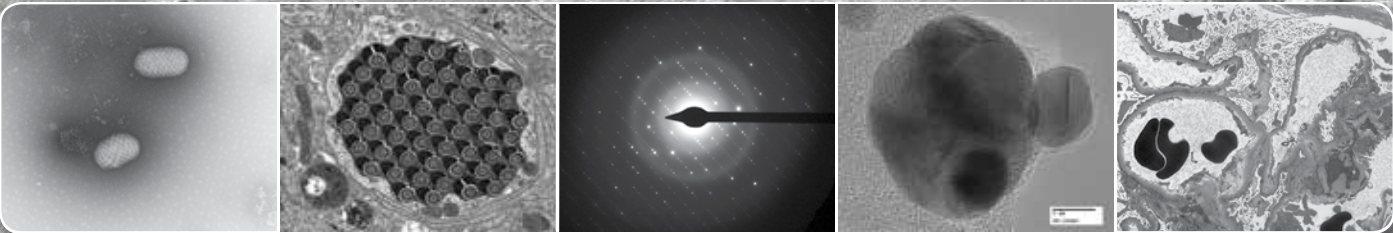


AMT Camera positions

- Side (35mm) mount**
- Widest field of view
 - Highest apparent sensitivity
 - Ideal for Life/Bio science imaging

- Bottom (mid) mount**
- Optimum scintillator location close to film height
 - Large field of view
 - Mixed use Bio/Materials imaging

- Bottom (lower) mount**
- Highest magnification factor
 - Ideal for Materials imaging



Side (35mm) Cameras

XR16S	16Mp
XR611S	11Mp
XR80S/81S	8Mp
XR280S sCMOS	2.8Mp
XR400S sCMOS	4Mp
XR50S	5Mp

Bottom (mid) Cameras

XR16M	16Mp
XR611M	11Mp
XR80/81M	8Mp
XR280M sCMOS	2.8Mp
XR400M sCMOS	4Mp

Bottom (Low) Cameras

XR16L	16Mp
XR611L	11Mp
XR111L	11Mp
XR80/81L	8Mp

AMT created the first live imaging high resolution TEM CCD camera system in 1992, since then AMT have become a leading worldwide supplier.

We provide imaging systems that improve laboratory efficiency and productivity. This is achieved by using low noise cameras with modern sCMOS and CCD sensors with fast progressive scan readouts. Electronics and software complement the camera characteristics and are tuned to provide the most efficient TEM image acquisition.

We design lenses specifically for TEM applications with outstanding resolution and sensitivity compared to alternative suppliers, this makes our optical solution a serious alternative to fibre optic systems.

For exceptional reliability our systems do not require beam blanking or water cooling, have no bellows or sliding o-rings.

More than 1000 worldwide customers can't be wrong, arrange a demonstration now to see the AMT advantage.

System highlights

- Resolutions from 1.3Mp to 16Mp
- Bio-Medical, materials or mixed use solutions
- Tomography, montaging & image analysis
- No beam blanking or water cooling required
- Cameras and software which are reliable and easy to use
- Easy to use 21CFR11 compliant software ideal for multi-user environments
- Images saved in industry standard TIFF, JPEG or AVI (video) format
- Custom finite conjugate lens based system with extremely low distortion and very high linearity
- Quality DELL computer system with all software included as standard, no hidden extras
- Guaranteed lifetime service and worldwide customer support with future upgrade path

	Camera Model					
	XR280	XR50	XR400	XR80/XR81	XR611	XR16
Megapixels	2.8	5	4	8	11	16
Pixel resolution	1920x1440	2452x2054	2048x2048	3296x2472	4000x2626	4872x3248
Side mount	√	√	√	√	√	√
Wide angle bottom	√		√	√	√	√
Standard bottom	√		√	√	√	√
Survey speed	30fps	20fps	>50fps	20fps	6fps	7fps
Effective pixel size	12μm	11μm	12μm	5.5/15/30μm	12/24μm	7.4/9μm
PC interface	Firewire	CAMLINK	Framestore	CAMLINK	LVDS	GigE
Peltier cooled			√	√	√	√
Sensor type	sCMOS	Interline CCD	sCMOS	Interline CCD	Interline CCD	Interline CCD

What's included?

- High resolution camera with custom finite conjugate lens
- X-Ray safe TEM flanges and adaptors
- High resolution glass mounted phosphor scintillator
- DELL computer system with wireless keyboard, mouse and 20" or 24" TFT monitor
- AMT image acquisition software, license free and available to install on as many computers as you wish with image measurement and montaging features included
- Image J image analysis, and Panavue Professional, image stitching software
- Montaging and TV (AVI) acquisition
- Installation and training for all supplied equipment and software
- 12 month warranty

Deben UK Ltd.

Brickfields Business Park,
Woolpit, Bury St. Edmunds,
Suffolk, IP30 9QS UK.

t: +44 (0)1359 244 870

f: +44 (0)1359 244 879

e: web@deben.co.uk

w: www.deben.co.uk

Available from: