

Manual Turn-Wheel Force Test Stand

SHIMPO's manual test stands offer the ability to obtain accurate, consistent results without the high cost of a motorized system. Our turn-wheel test stand is excellent for applications where more precise control is necessary.

The FGS-1000H turn-wheel test stand has a 1000 lb. (500 kg) capacity and can ensure accurate, consistent test results with the addition of a SHIMPO Instruments digital or mechanical force gauge.

Nearly all manufacturers' gauges are compatible with SHIMPO's test stands for incredible versatility. These stands are designed for precision, balance, and durability. Therefore they are perfectly suited for measuring a limitless range of materials such as, wire, spring, plastic, paper cord, tubing, glass and composites.

Top Plate Adjustment:

Loosen the 1/4" cap screws that secure the top plate in position. While supporting the upper plate, pull the quick release pins. Lower the platform to give the desired height from the lower platform to the gauge end, leaving room for your accessories and material. Replace the quick release pins and tighten the cap screws to secure the platform.

The Hand Wheel:

ø6.8"

The hand grip section is rounded with a thickness of 1". A 1.25" wrench flat is located at the top of the hand wheel assembly to allow for an easy assist on adjustments at high loads.

General Use:

Set the top plate at the length needed for your task. Mount the gauge by inserting the cap screws from the back side of the gauge mounting plate into the back of the gauge. Mount the accessories needed to accomplish your test. Adjust the base plate to center you load directly under your gaugecenter. Begin testing.

Caution:

Wear safety glasses. Springs or other materials tested can contain substantial potential energy. Parts can break apart, fracture, or collapse if subjected to forces beyond their structural integrity.

SPECIFICATIONS

Capacity: 500Kg (1,000lbs.)

Adjustable Range: up to 13"

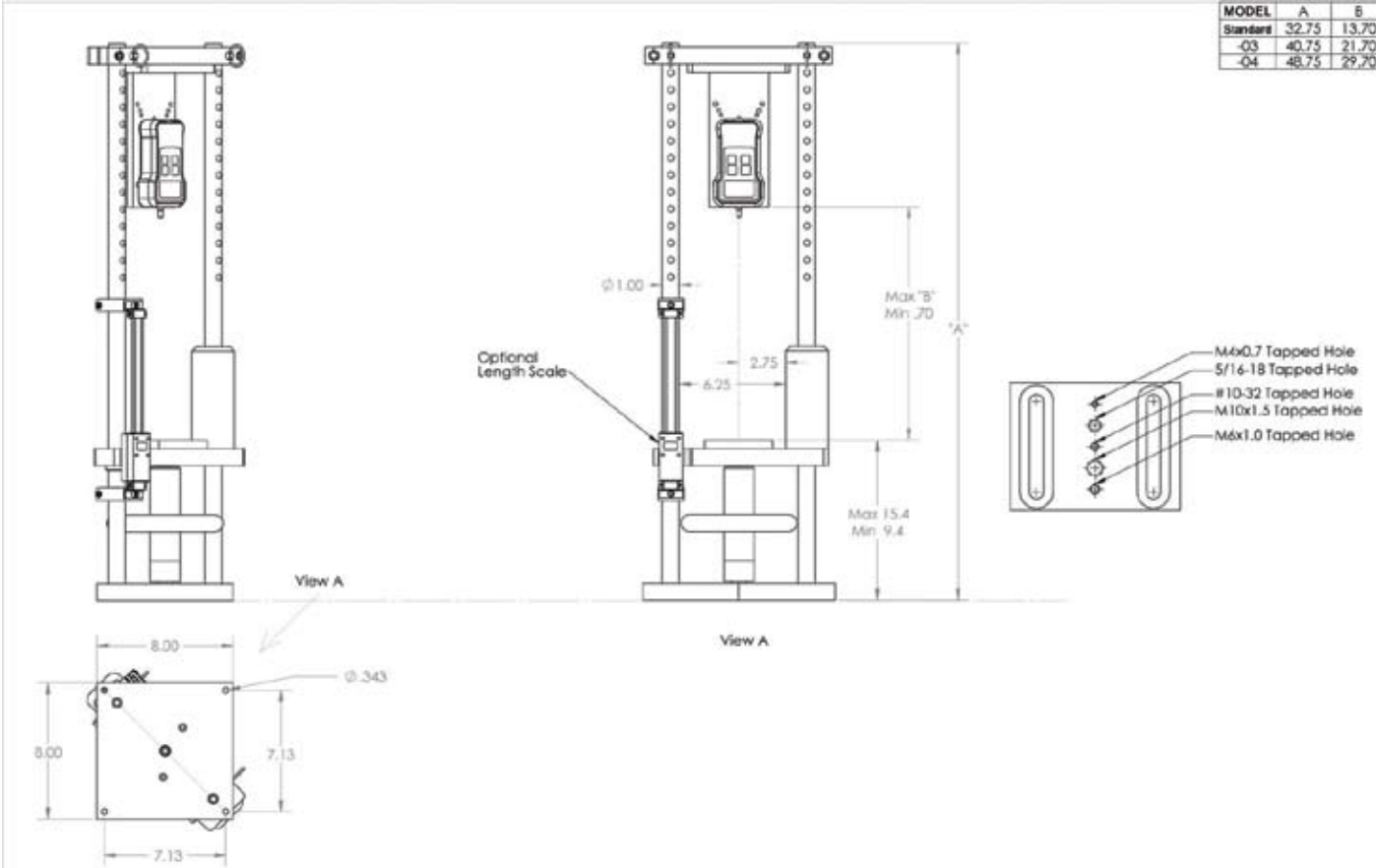
Sample Platform: 6" diameter

Full Length Stroke: 6" stroke

Hand Wheel Travel Speed: 0.1" per revolution



MODEL	A	B
Standard	32.75	13.70
-03	40.75	21.70
-04	48.75	29.70



INCLUDED PARTS

- 5mm Allen wrench.....1pc.
- 3/16" Allen wrench.....1pc.
- 1/4" Allen wrench.....1pc.
- Phillips head screw M4x15.....4pcs.
- Allen head screw M6x14.....4pcs.
- 10 mm Threaded Stud.....1pc.

A *Nidec* Group Company

SHIMPO All for dreams